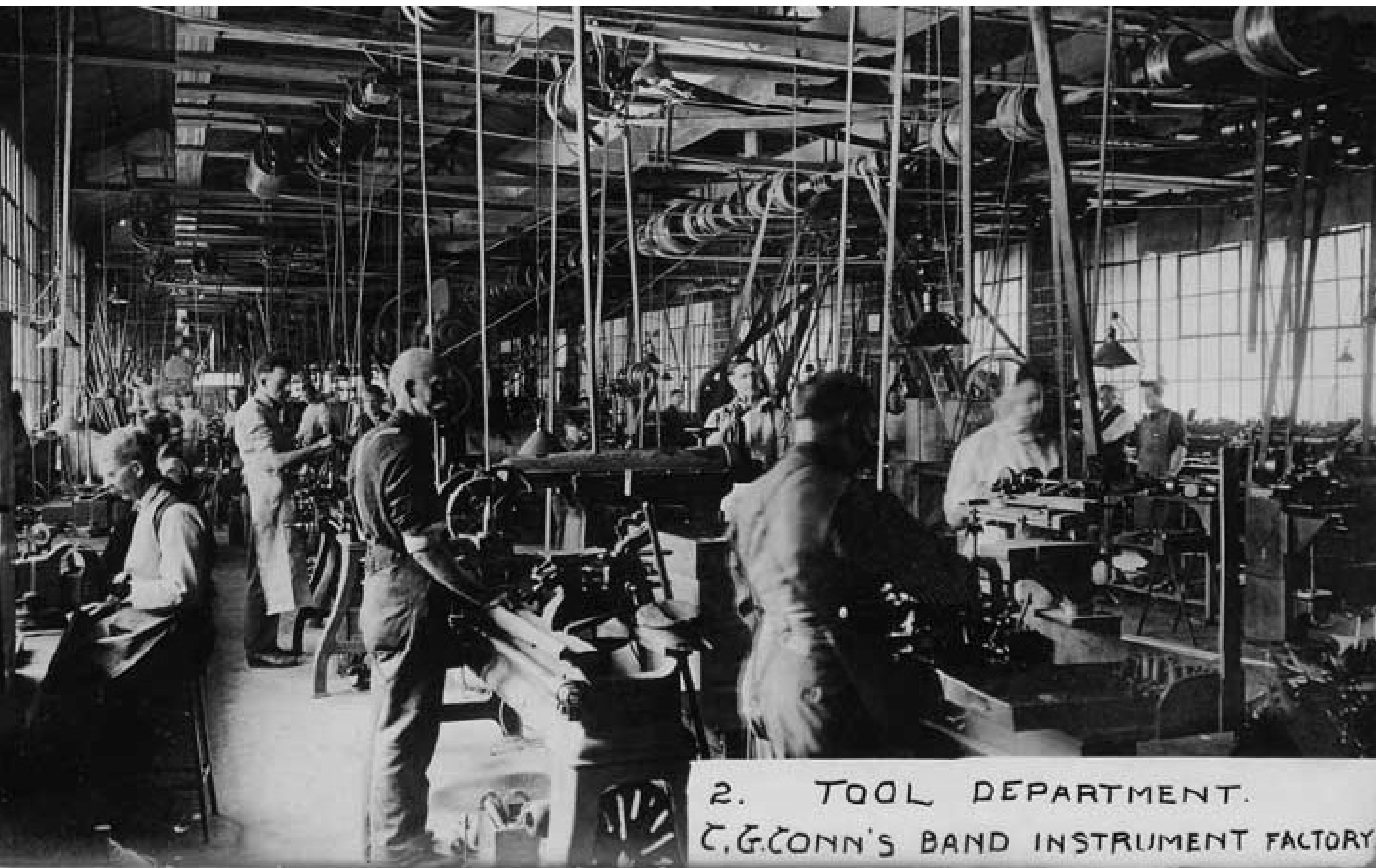


## THE HOME OF THE CELEBRATED CONN INSTRUMENTS

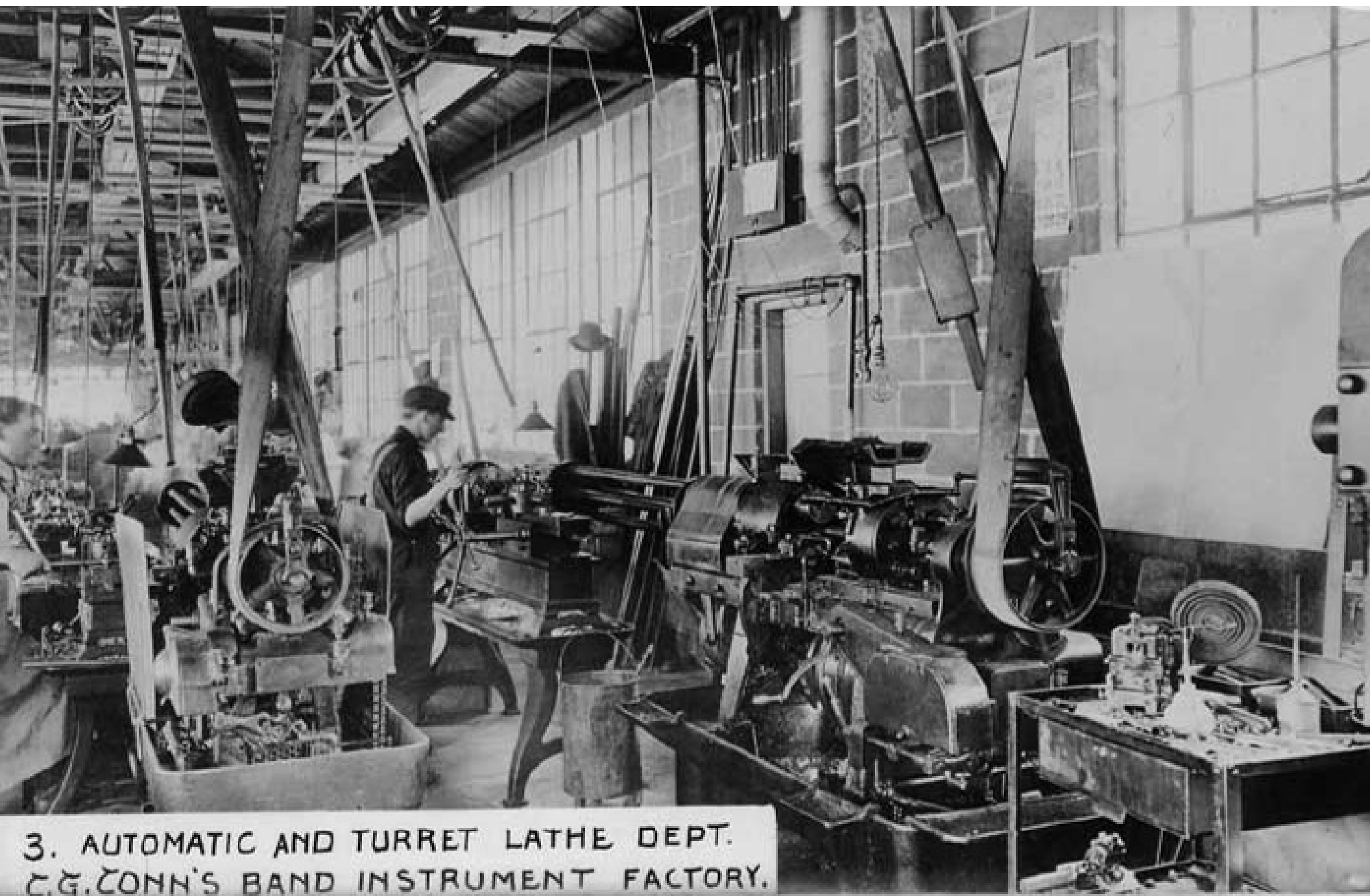
This latest illustration of the *New Wonder* factory shows where the best instruments in the world are manufactured. The factory employs 303 wage earners, of whom 250 are men and 53 are women. No boys or girls are employed. The men work nine hours per day and the women eight hours per day. The output of this factory averages about 800 instruments per month, not counting Bugles, Drums and Musical Traps and Accessories.

The Conn instruments are used and recommended by all great musicians and they will improve the playing ability of any performer at least twenty-five percent.

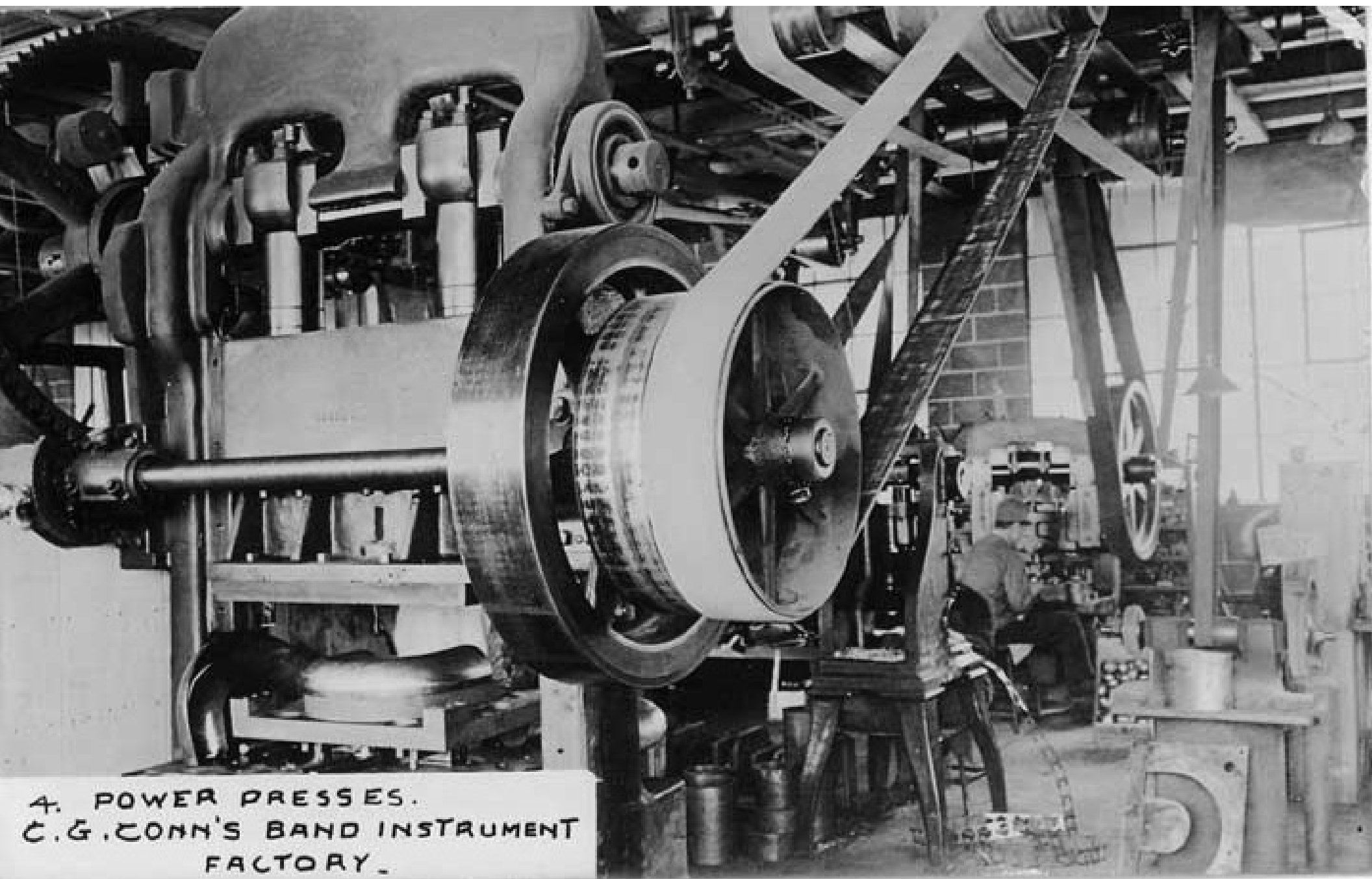
ADDRESS, C. G. CONN, INC., ELKHART, IND.



2. TOOL DEPARTMENT.  
C.G. CONN'S BAND INSTRUMENT FACTORY



3. AUTOMATIC AND TURRET LATHE DEPT.  
C.G. CONN'S BAND INSTRUMENT FACTORY.



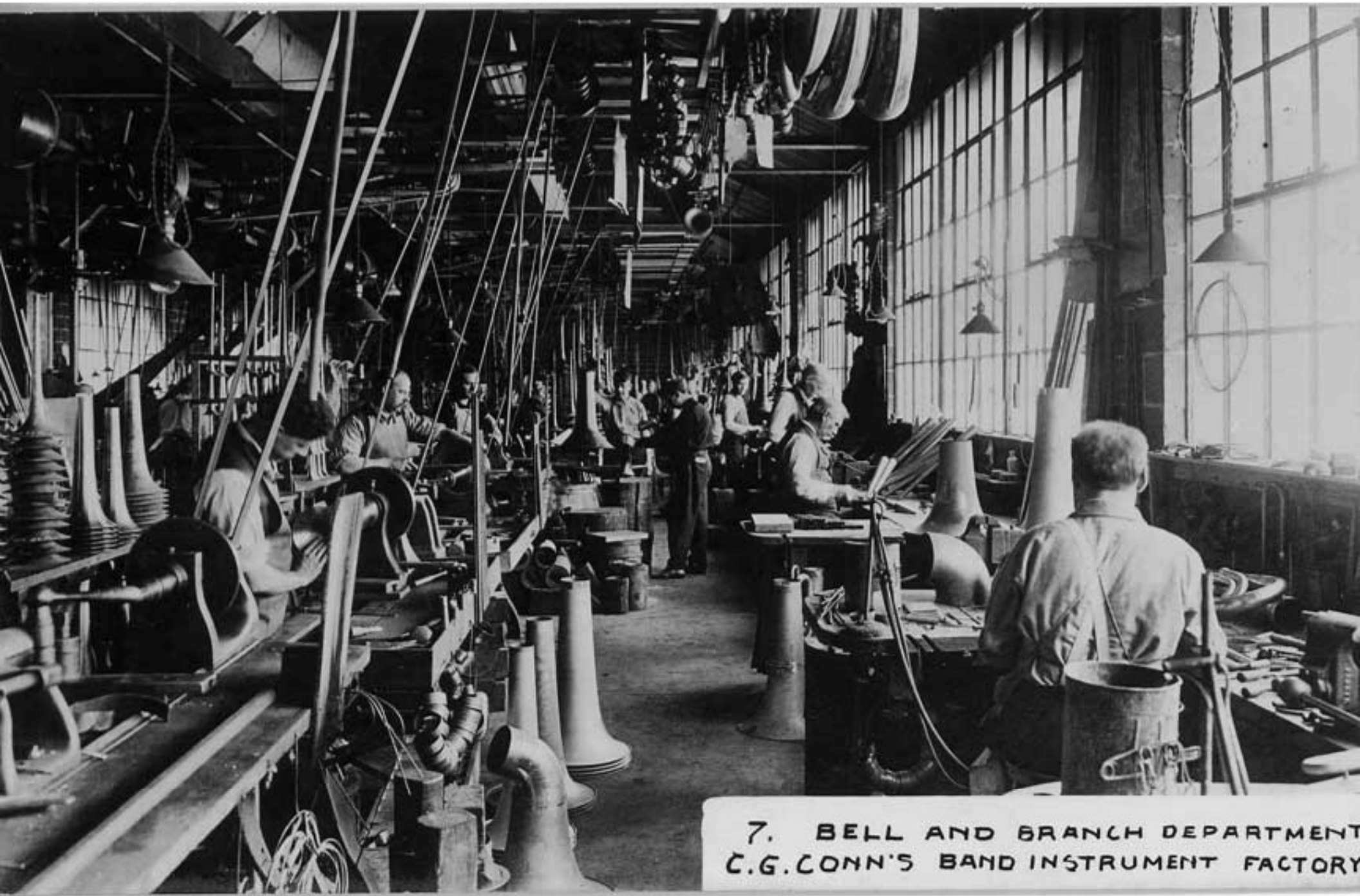
4. POWER PRESSES.  
C.G. COHN'S BAND INSTRUMENT  
FACTORY.



5. MOUTHPIECE MAKING DEPT.  
C. G. ZONN'S BAND INSTRUMENT  
FACTORY.



NO. 6. VALVE MAKING DEPARTMENT  
C. G. CONN'S BAND INSTRUMENT  
FACTORY.

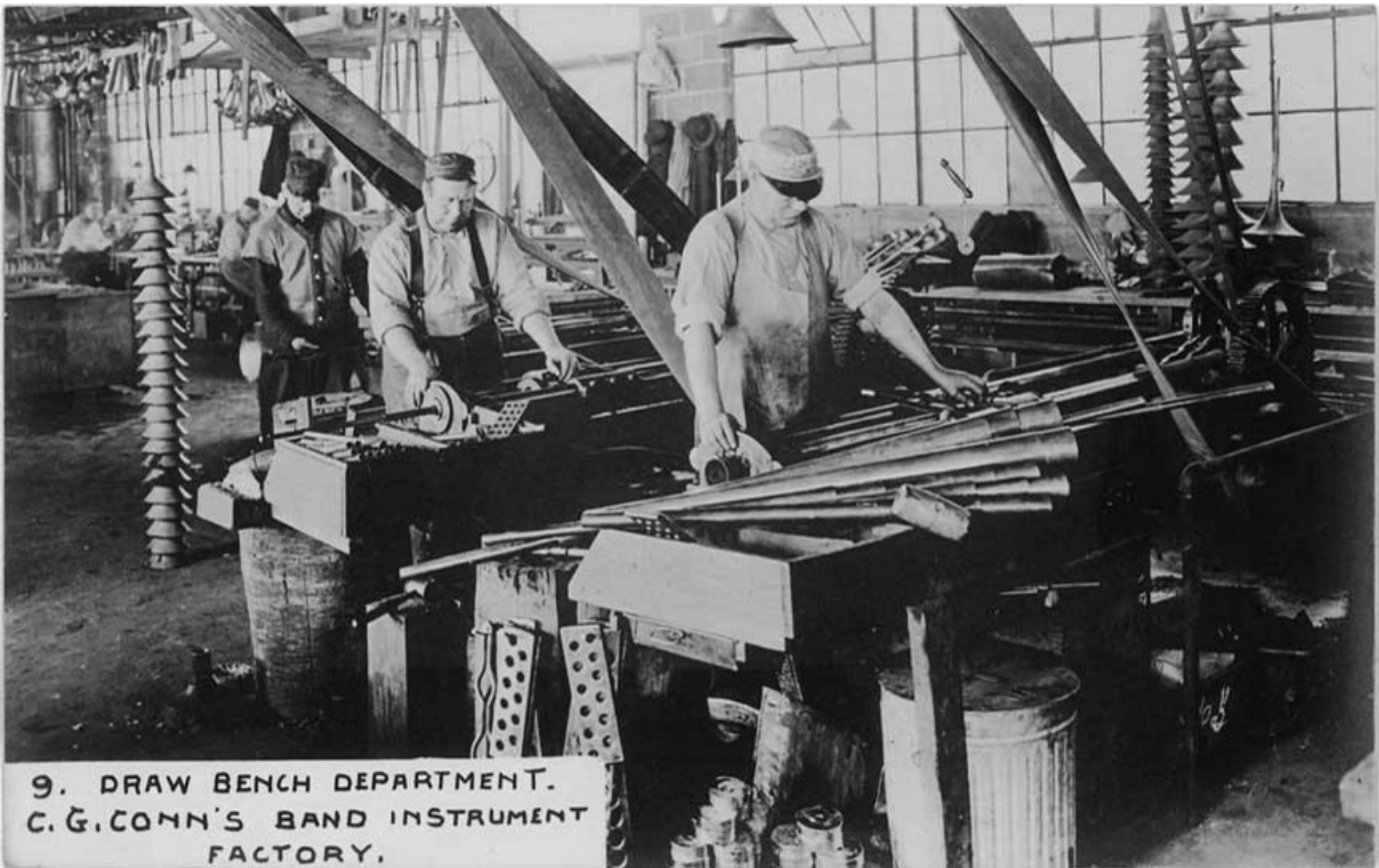


7. BELL AND BRANCH DEPARTMENT  
C.G. CONN'S BAND INSTRUMENT FACTORY



NO 8. BASS INSTRUMENT MOUNTING DEPT.  
C.G. CONN'S BAND INSTRUMENT FACTORY





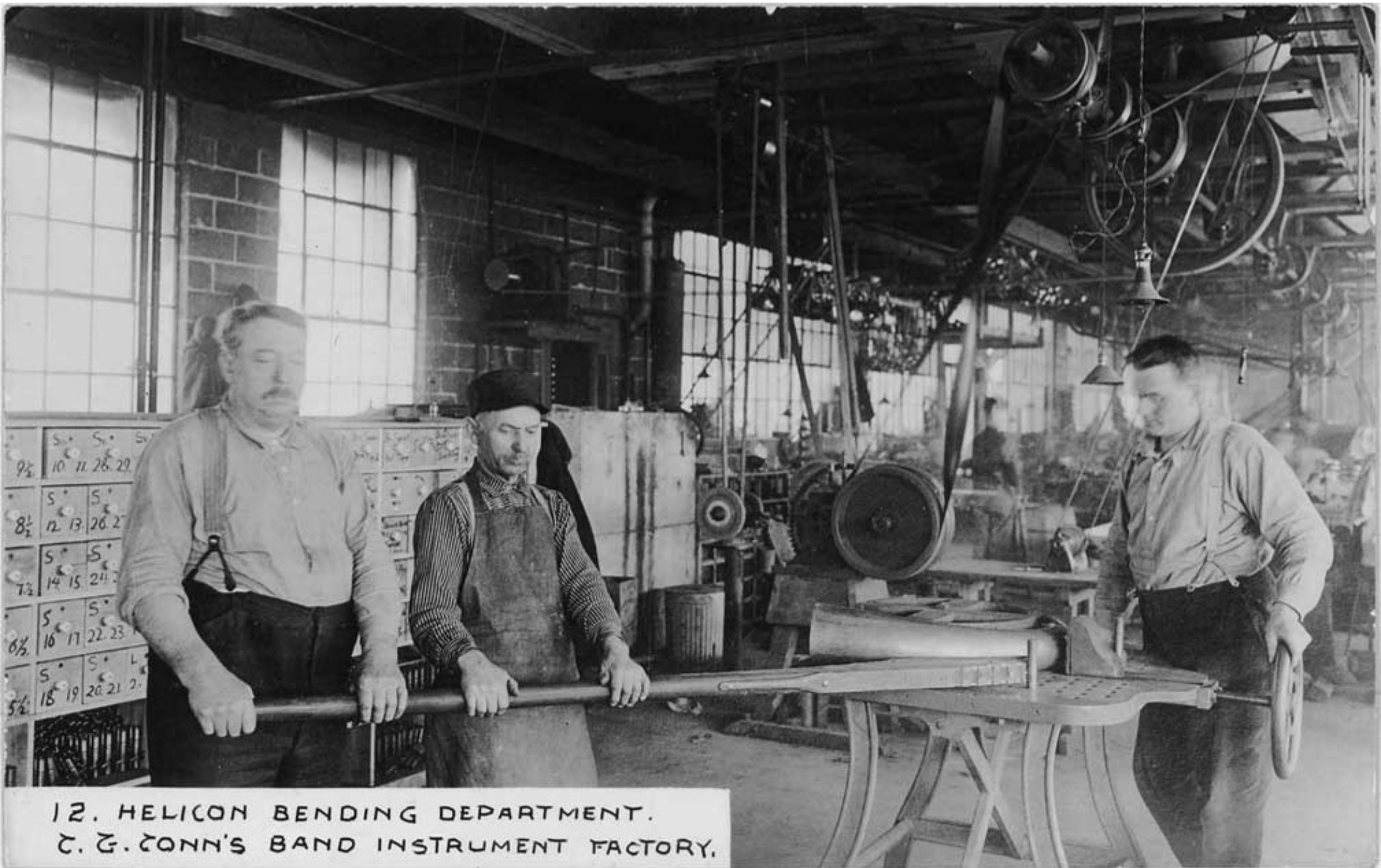
9. DRAW BENCH DEPARTMENT.  
C. G. CONN'S BAND INSTRUMENT  
FACTORY.



10. CORNET AND TRUMPET MOUNTING DEPT.  
C. G. ZONN'S BAND INSTRUMENT FACTORY.



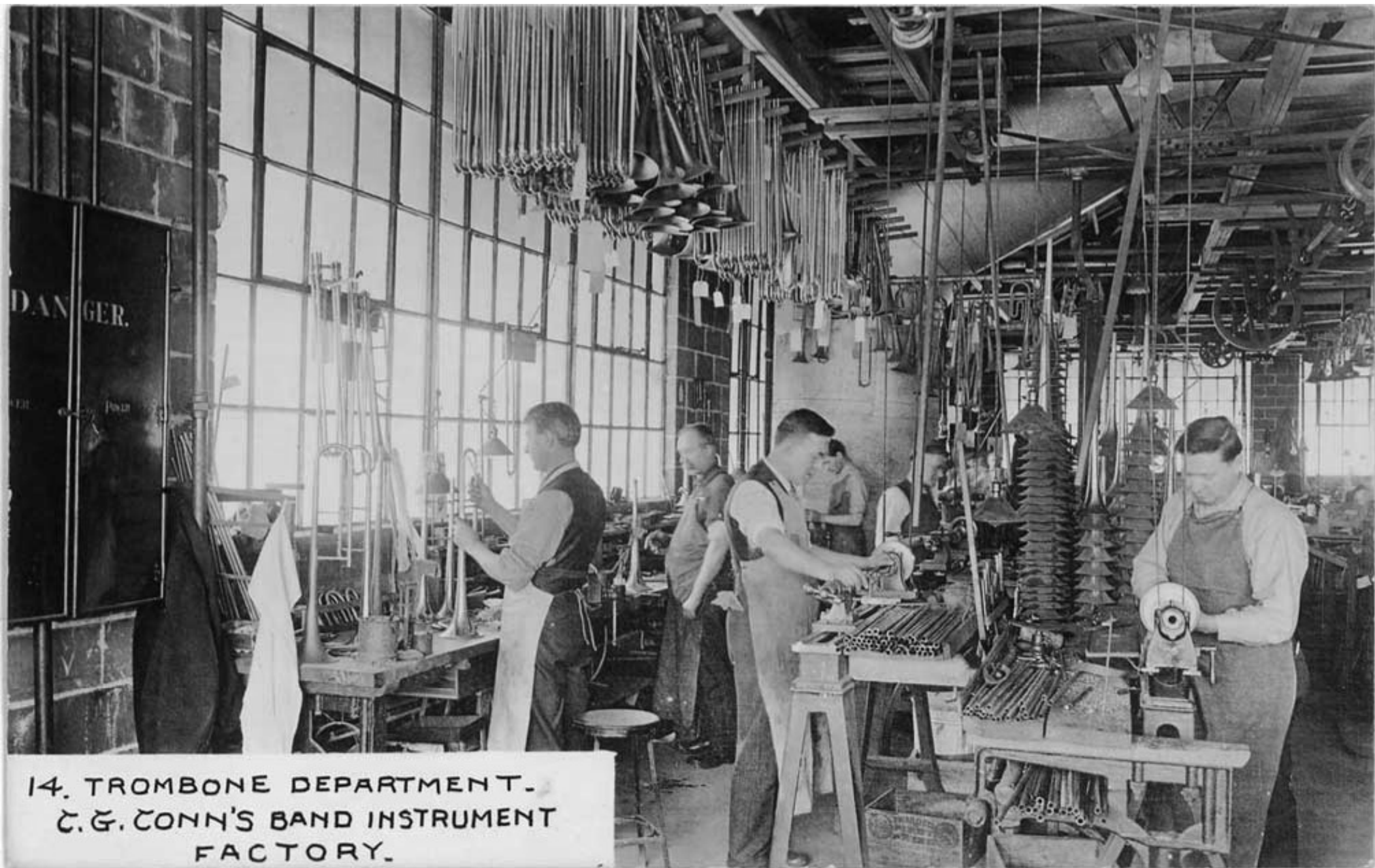
II. CROOK MAKING DEPARTMENT.  
C.F. CONN'S BAND INSTRUMENT  
FACTORY.



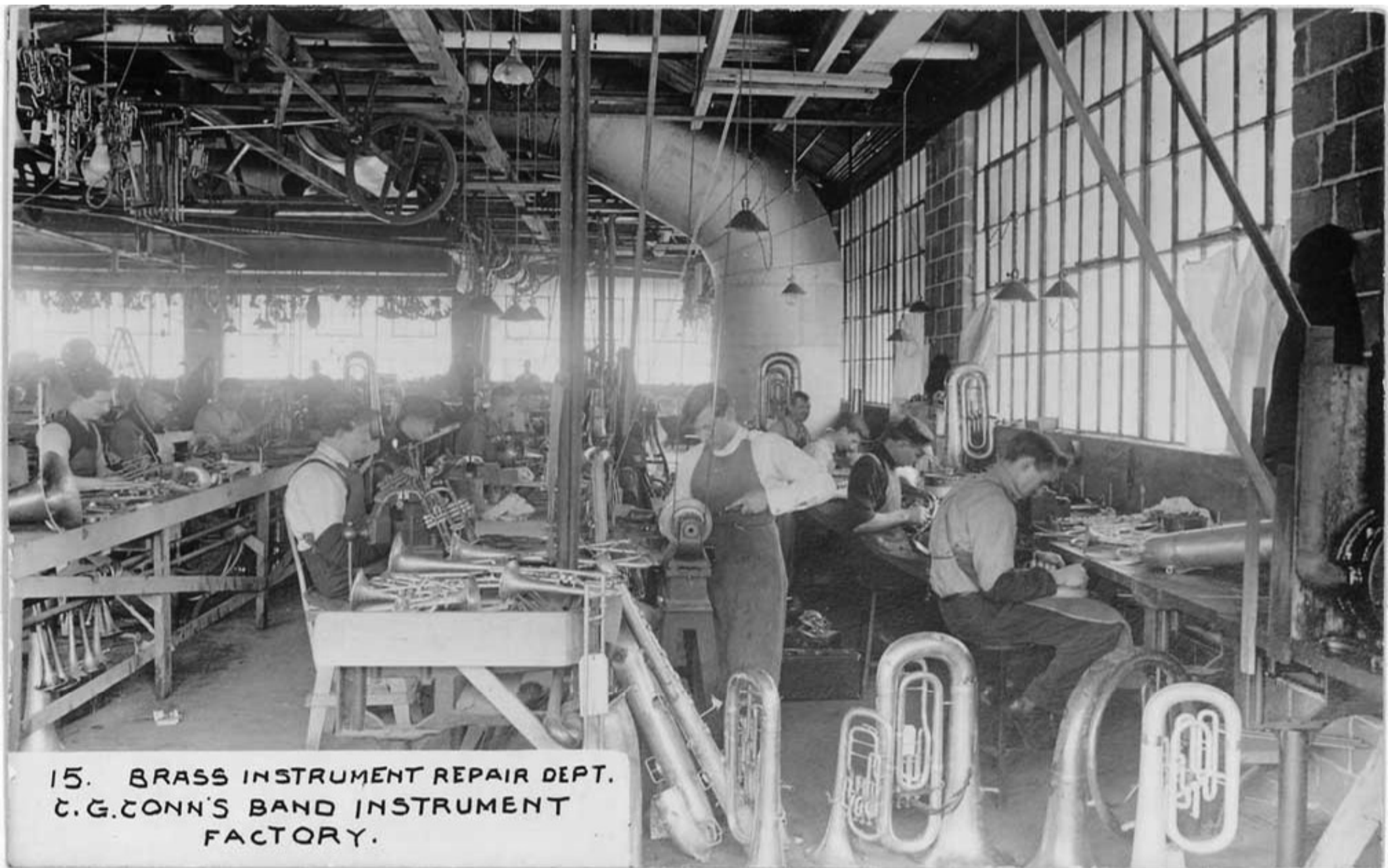
12. HELICON BENDING DEPARTMENT.  
C. E. CONN'S BAND INSTRUMENT FACTORY.



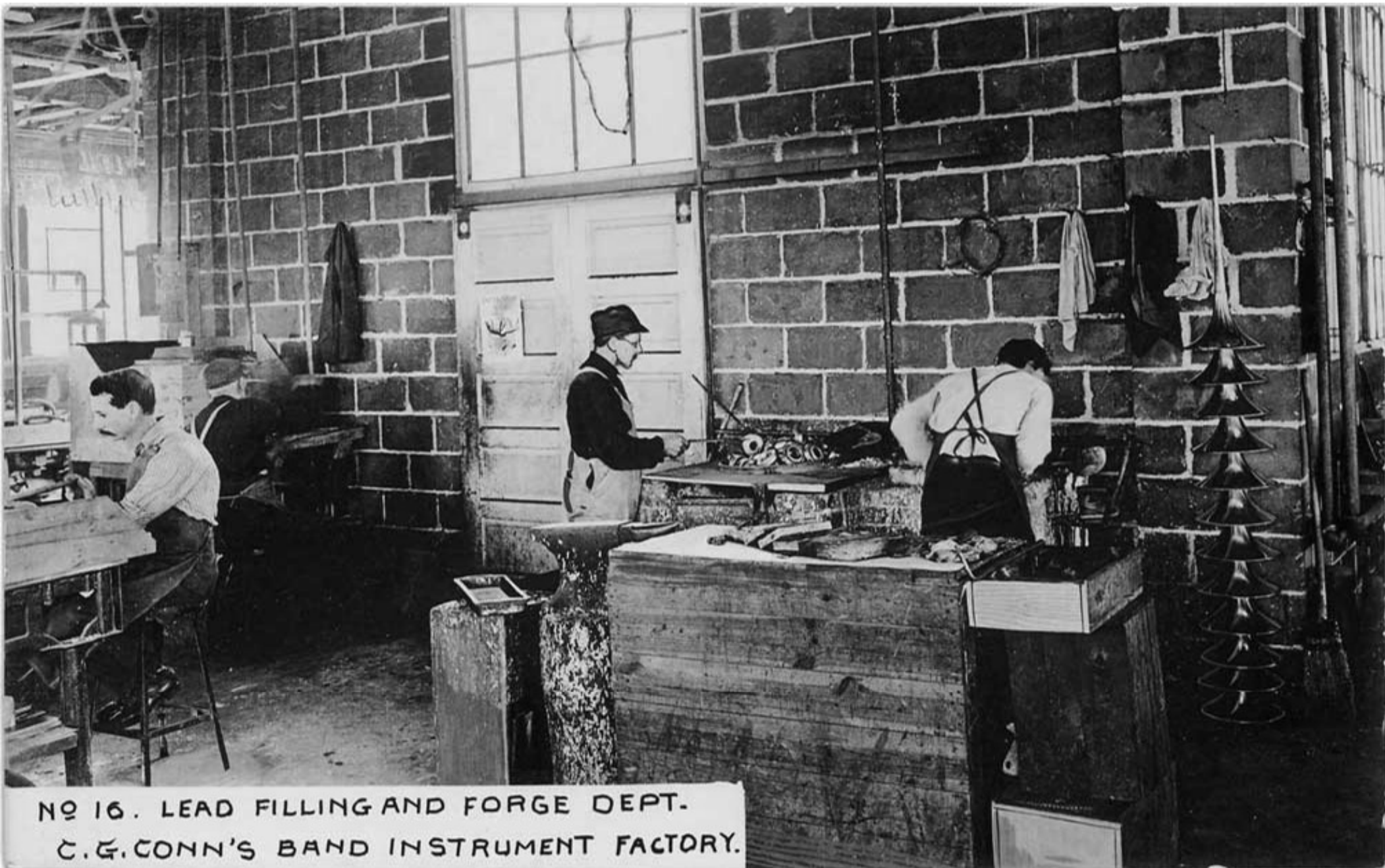
13. BENDING DEPARTMENT.  
C. & G. CONN'S BAND INSTRUMENT  
FACTORY.



14. TROMBONE DEPARTMENT.  
C. G. CONN'S BAND INSTRUMENT  
FACTORY.



15. BRASS INSTRUMENT REPAIR DEPT.  
C. G. CONN'S BAND INSTRUMENT  
FACTORY.

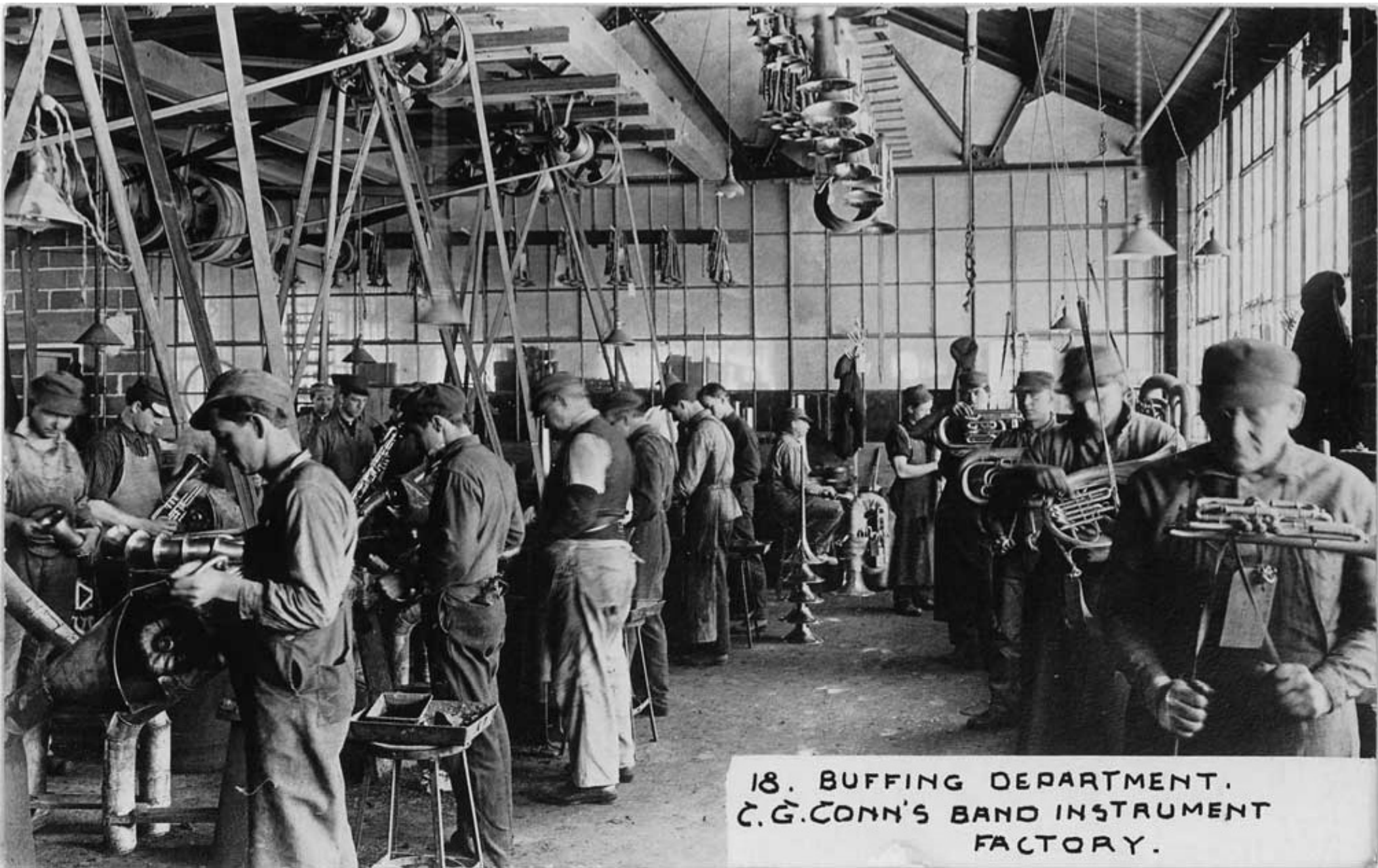


NO 16. LEAD FILLING AND FORGE DEPT.  
C. & G. CONN'S BAND INSTRUMENT FACTORY.





17. SAXOPHONE DEPARTMENT.  
C.G. CONN'S BAND INSTRUMENT FACTORY



18. BUFFING DEPARTMENT.  
C. G. CONN'S BAND INSTRUMENT  
FACTORY.



19. STRAPPING DEPARTMENT.  
C. & G. CONN'S BAND INSTRUMENT  
FACTORY.



20. PLATING DEPARTMENT. -  
C. G. CONN'S BAND INSTRUMENT FACTORY.



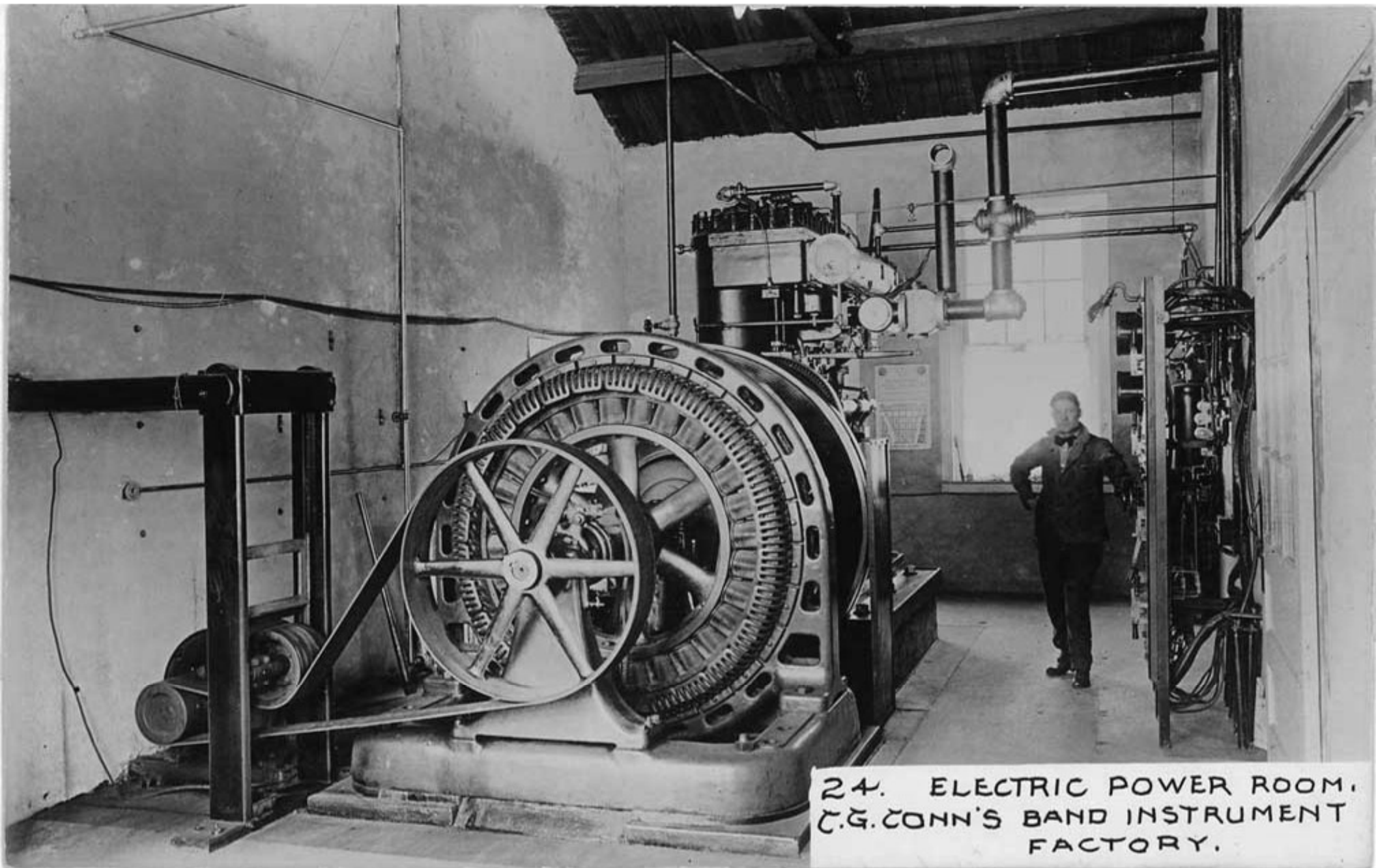
NO 21. ENGRAVING AND BURNISHING DEPT.  
C.G. CONN'S BAND INSTRUMENT FACTORY.



NO 22. BRASS INSTRUMENT ASSEMBLING DEPT.  
C. G. CONN'S BAND INSTRUMENT FACTORY.

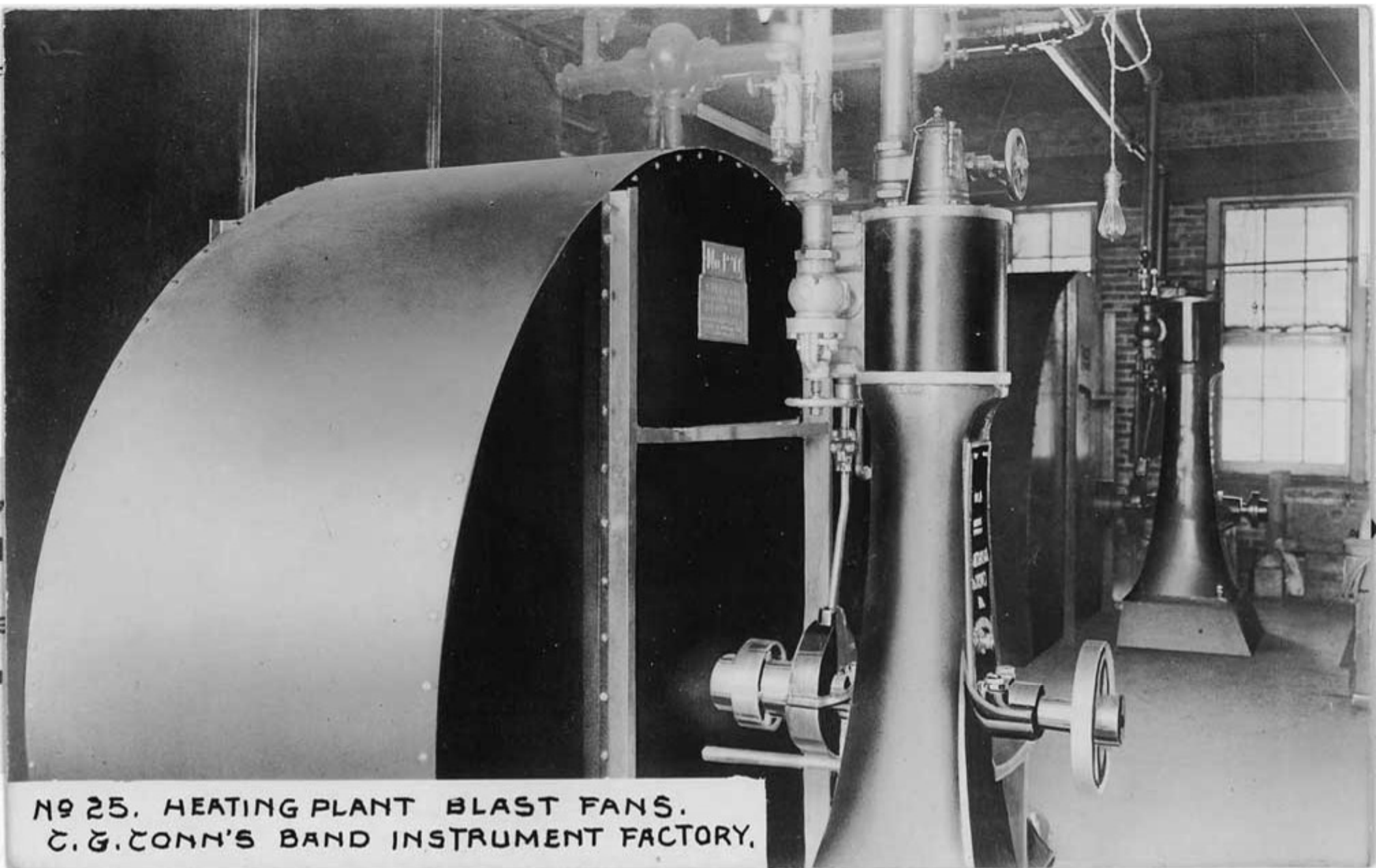


23. BRASS FOUNDRY —  
C. & G. CONN'S BAND INSTRUMENT  
FACTORY.



24. ELECTRIC POWER ROOM,  
C.G. CONN'S BAND INSTRUMENT  
FACTORY.





NO 25. HEATING PLANT BLAST FANS.  
C. G. CONN'S BAND INSTRUMENT FACTORY.



NO 26. BOILER ROOM. —  
C. G. CONN'S BAND INSTRUMENT FACTORY.







29. CASE MAKING DEPARTMENT.  
C. G. CONN'S BAND INSTRUMENT FACTORY.



30. STRING INSTRUMENT DEPARTMENT.  
C. G. CONN'S BAND INSTRUMENT FACTORY.

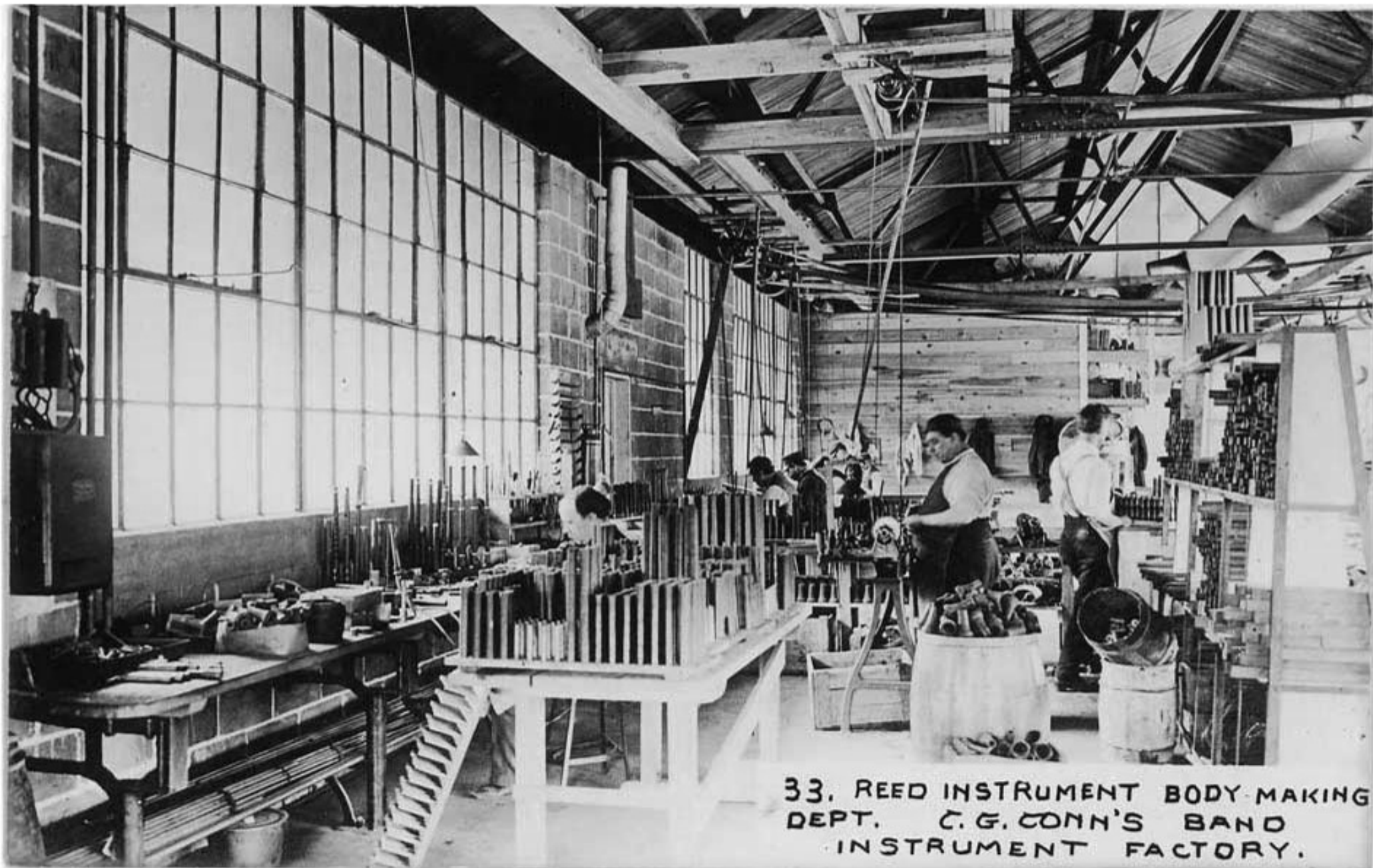


NO 31. FLUTE AND PICCOLO MAKERS AND  
CLARINET ASSEMBLING DEPARTMENT.  
C. G. CONN'S BAND INSTRUMENT FACTORY.



32. CLARINET MAKERS DEPARTMENT,  
C. G. CONN'S BAND INSTRUMENT FACTORY.

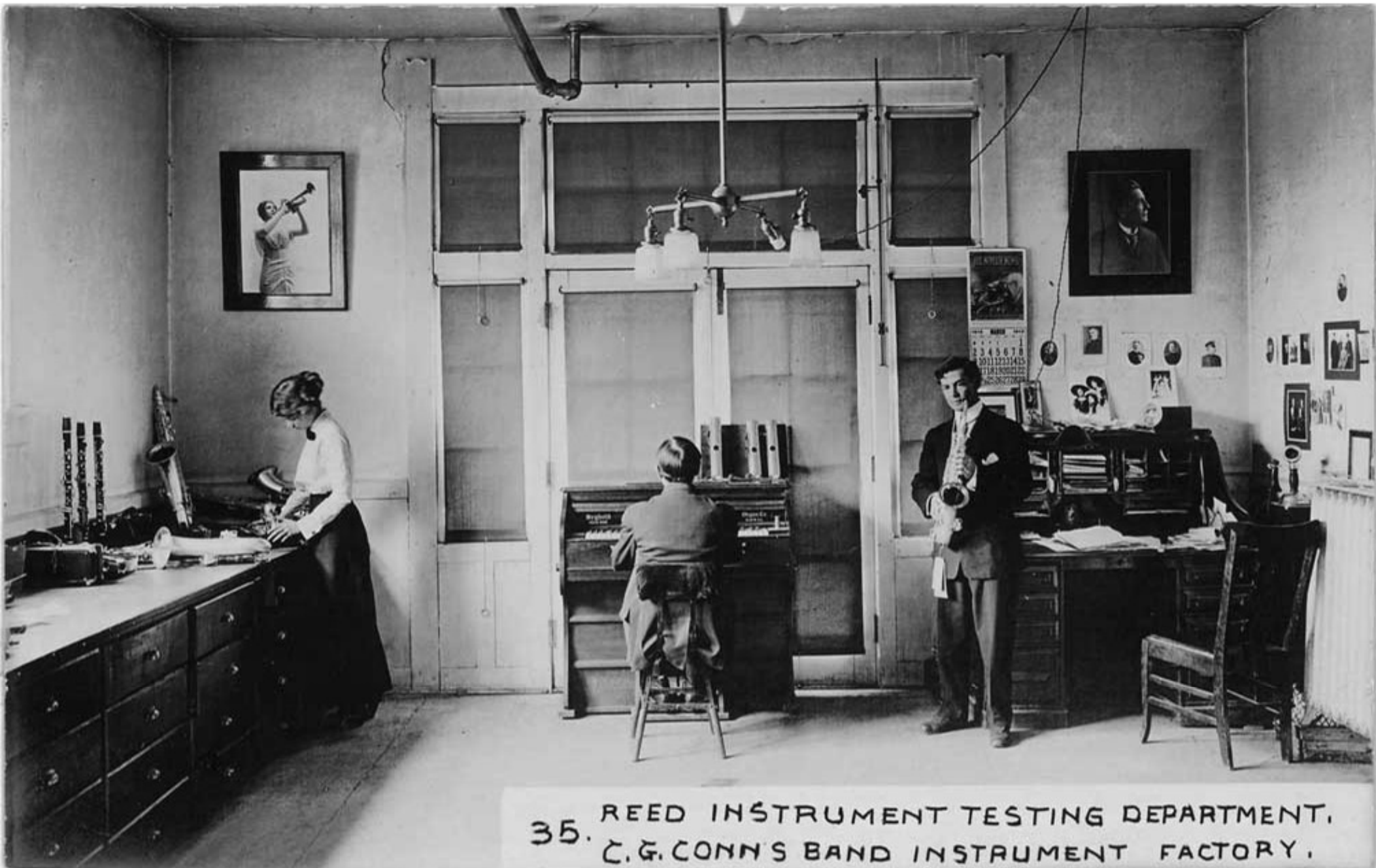




33. REED INSTRUMENT BODY-MAKING  
DEPT. C. G. CONN'S BAND  
INSTRUMENT FACTORY.



NO 34. DRUM MAKING DEPARTMENT.  
C.&CONN'S BAND INSTRUMENT FACTORY.





36. CORNET AND TRUMPET TESTING DEPT.  
C. G. CONN'S BAND INSTRUMENT FACTORY.



NO 37. PACKING AND RECEIVING DEPARTMENT.  
C. G. CONN'S BAND INSTRUMENT FACTORY.



38. ACCOUNTING DEPARTMENT  
C.G. CONN'S BAND INSTRUMENT  
FACTORY.



39 STENOGRAPHIC DEPARTMENT,  
C. C. CONN'S BAND INSTRUMENT FACTORY.



№ 40. OPERATING ROOM PHOTO DEPARTMENT  
C. G. CONN'S BAND INSTRUMENT FACTORY.







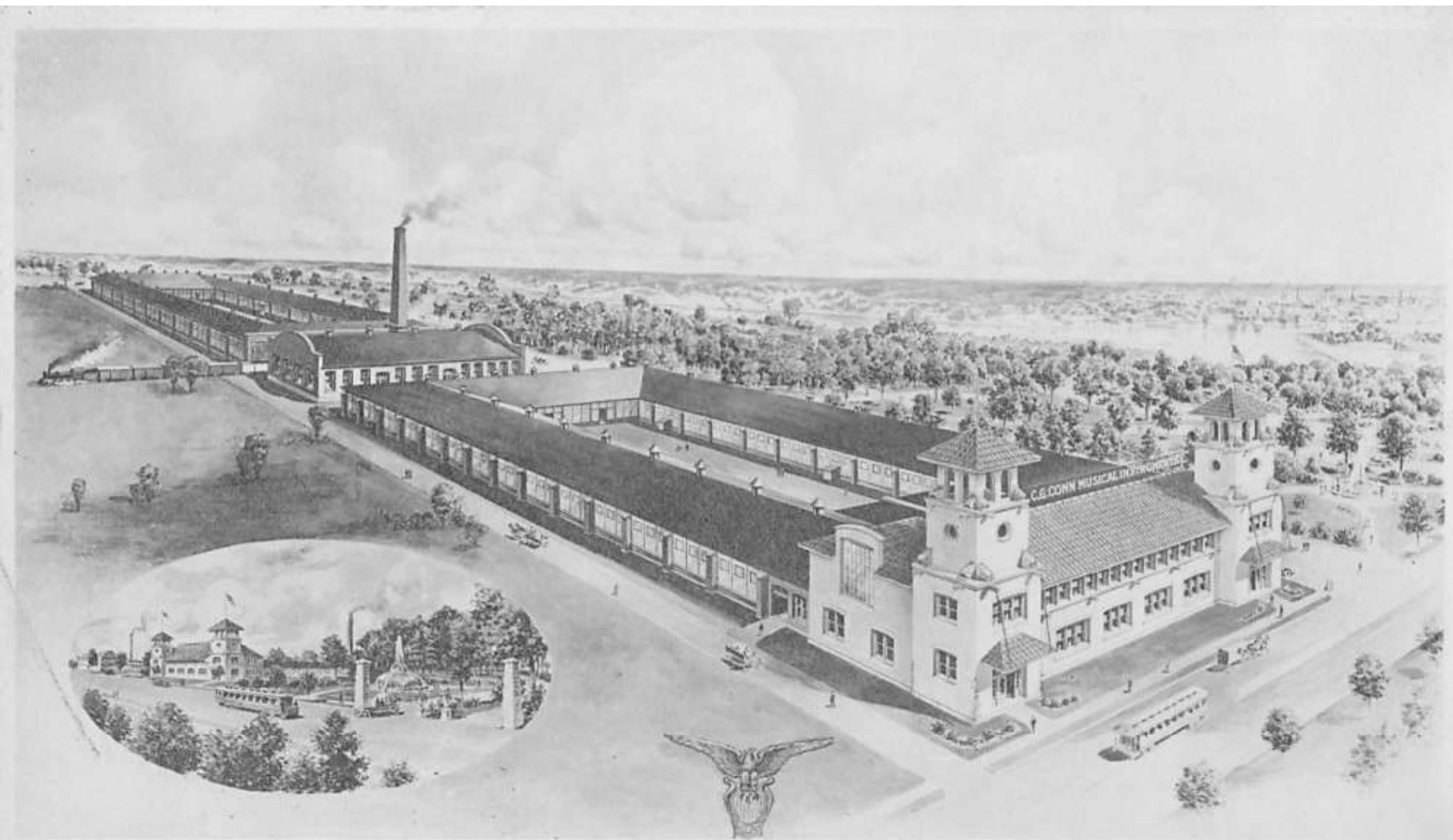
42. DICTATION ROOM NO 1.  
C. G. CONN'S BAND INSTRUMENT  
FACTORY.



№43. DICTATION ROOM № 2.  
C.G. CONN'S BAND INSTRUMENT FACTORY



NO 44. C.G. ZONN'S PRIVATE OFFICE.  
C.G. ZONN'S BAND INSTRUMENT FACTORY.



C.G. CONN MUSICAL INSTRUMENT FACTORY. ELKHART-IND.