

# TRIAO PAIRS WITHIN SYMMETRICAL SCALES

## CHROMATIC SCALE



## DIVIDE CHROMATIC SCALE BY 2 = 2 WHOLE TONE SCALES



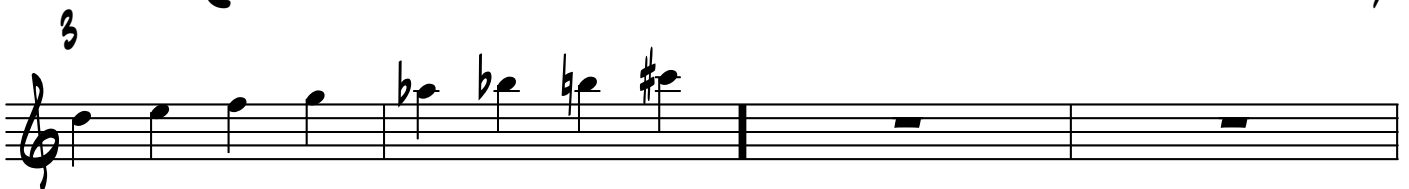
## -AUGMENTED TRIAD PAIRS WITHIN EACH WHOLE TONE SCALE-



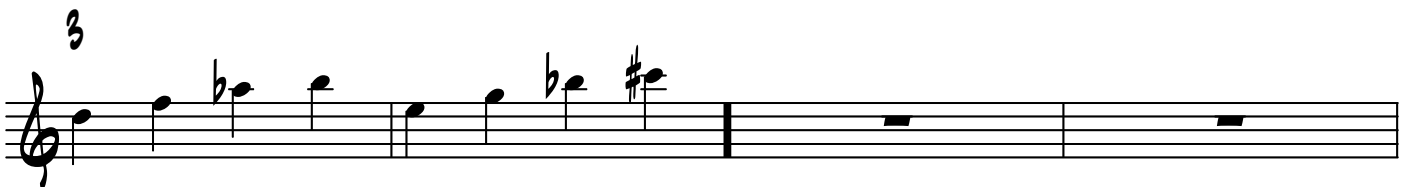
## DIVIDE CHROMATIC SCALE BY 3 = 3 DIMINISHED SCALES



(REMEMBER EACH DIMINISHED SCALE CONTAINS 4 DOMINANT 7TH CHORDS!)



## -DIMINISHED TRIAD PAIRS/(ARPEGGIOS) WITHIN EACH DIMINISHED SCALE-



# DIVIDE CHROMATIC SCALE BY 4 = 4 AUGMENTED SCALES



-AUGMENTED TRIAD PAIRS IN AUGMENTED SCALE-



WHOLE TONE SCALE = TTTTTT

(TWO AUGMENTED TRIADS A TONE APART)

DIMINISHED SCALE = TSTSTSTS

(TWO DIMINISHED TRIADS A TONE APART)

AUGMENTED SCALE = MIN3RD/S/MIN3RD/S/MIN3RD/S

(TWO AUGMENTED TRIADS A SEMI-TONE APART)